

HOW IS THE FUNDRAISING GOING?

The trustees agreed to support the community centre project in October, with some trepidation since we needed to raise a lot of money and some of it quickly.

We shared the dream with all of you – the many people who have helped out in so many ways over the last 5 years. The response has been truly amazing!

The outstanding figure for the building project was £20,000. The first target was to buy the land.

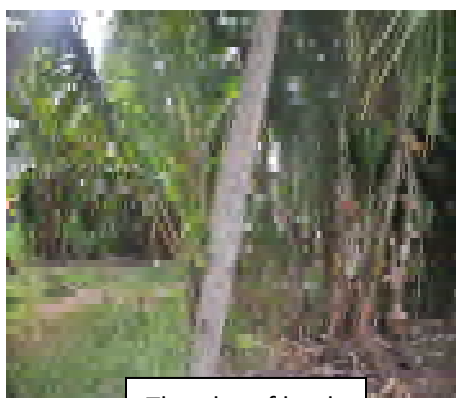
Trustees had already committed £5000 from existing funds, leaving another £8000 needed by at latest April, though ideally by February.

Amazingly, thanks to commitment and generosity of many people, by the end of January we had raised the £8000. The land has been bought!

The next phase is to raise £12,000 needed to build the centre. We are planning a number of fundraising events including a cycle ride and an 'open garden' at the best urban garden in East London.

We hope to start work on the building this Summer and take a team of volunteers out in Summer 2011 to complete the project.

Many, many thanks to everyone who has helped already – there is more to be done, but we've made a very good start.



The plot of land

**IT'S AMBITIOUS,
IT'S BOLD, BUT IT'S WHAT
THE COMMUNITY NEEDS.**

**Thank you for joining us in
bringing this dream to
reality**



IT'S CRAMPLING THEIR STYLE



Space at the present centre is very crowded. The team have been using this small space as a centre for 2 years and have now outgrown it.



Contacts:

Asha Trust
141 Capel Rd.
London E7 0JT

e. info@ashatrust.co.uk

t. 020 8553 9175

facebook

[Asha Trust Thang](#)

You can donate using
[www.virginmoneygiving.com/
charities/ashatrust](http://www.virginmoneygiving.com/charities/ashatrust)